

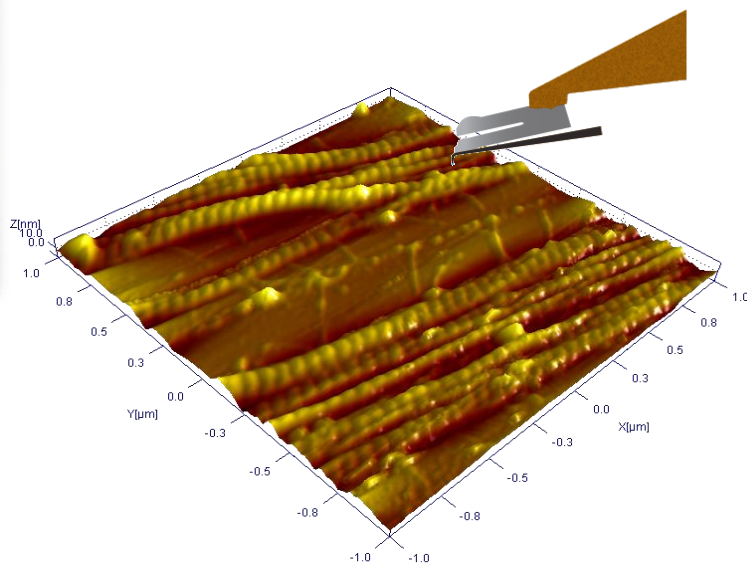
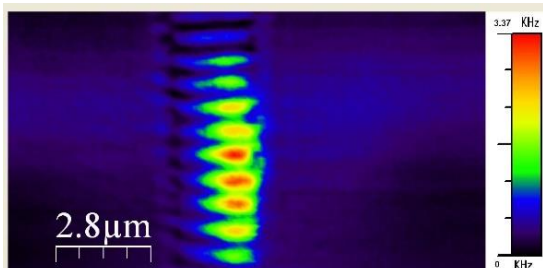
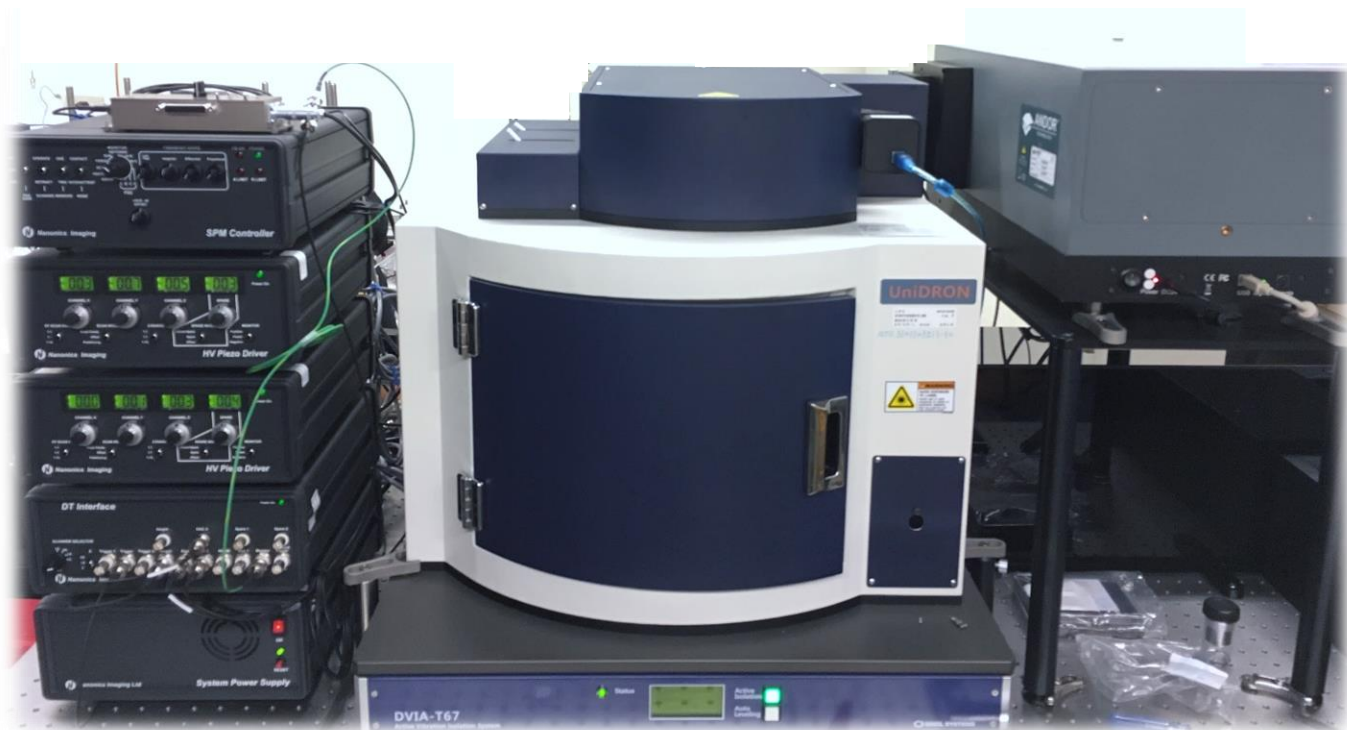


CL Technology Co., Ltd.

UniDRON

Laser Spectroscopy Technologies

Confocal Micro and Nano Raman / PL / TRPL / FLIM





UniDRON

Confocal Far / Near Field Spectroscopy



Feature & Benefits

- High sensitivity, High resolution
- Double edge or notch filters
- Motorized microscope chamber
- Up to four gratings selection
- Upgrade to AFM / NSOM / EFM / **SECM**
- Upgrade to **TERS / NSOM-Raman**
- Upgrade to 2D scanner
- Upgrade to TCSPC for TRPL
- Upgrade to FLIM with 2D scanner
- Upgrade to **Nano-TCSPC with NSOM**
- Upgrade to **AFM combined IR & Raman**
- All Single Mode Lasers for Raman and PL applications with fiber free

High Resolution Mapping Stage

Travel range : 76 x 52 mm(3" x 2")

Repeatability : <1 μ m

Accuracy : 1 μ m

Min. step : $\geq 0.05\mu$ m

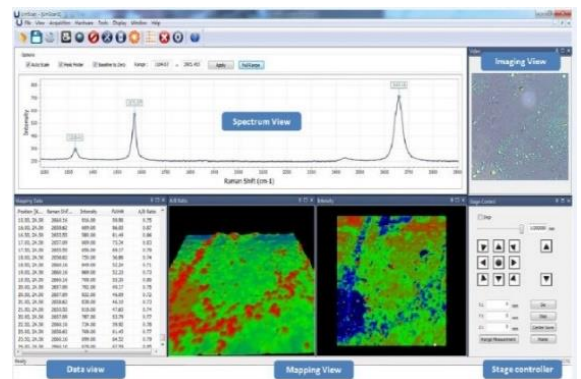
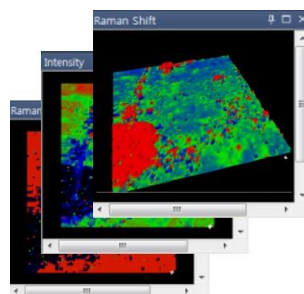
Max. travel speed : 120mm/s

Including Controller and operating joystick

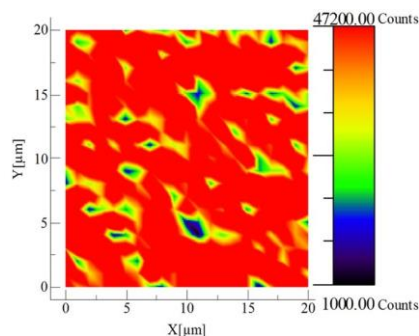
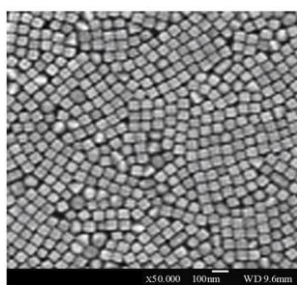
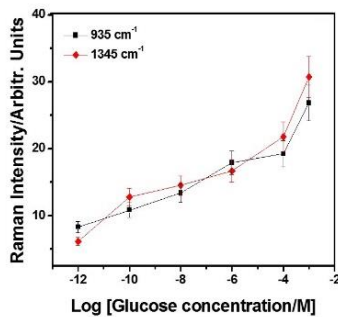
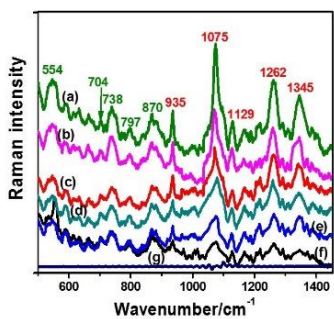


Mapping Image - UniScan

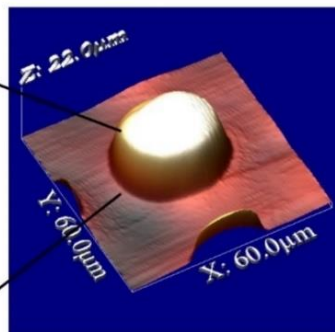
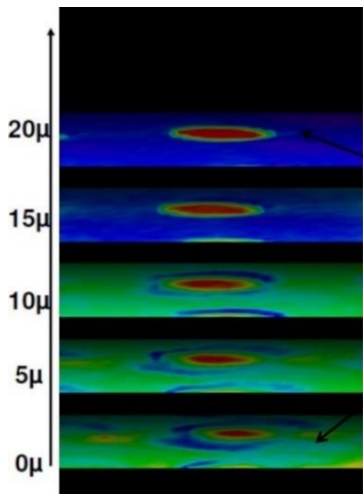
- X, Y linear scanning, 2D & 3D mapping Image
- Peak ratio, Intensity or counting, FWHM image, Raman shift or wavelength



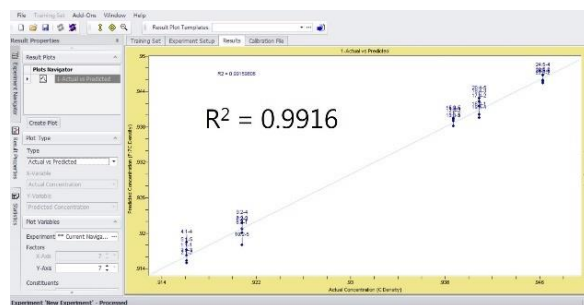
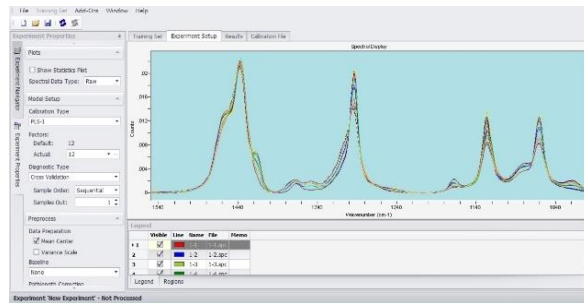
Surface Enhanced Raman Scattering



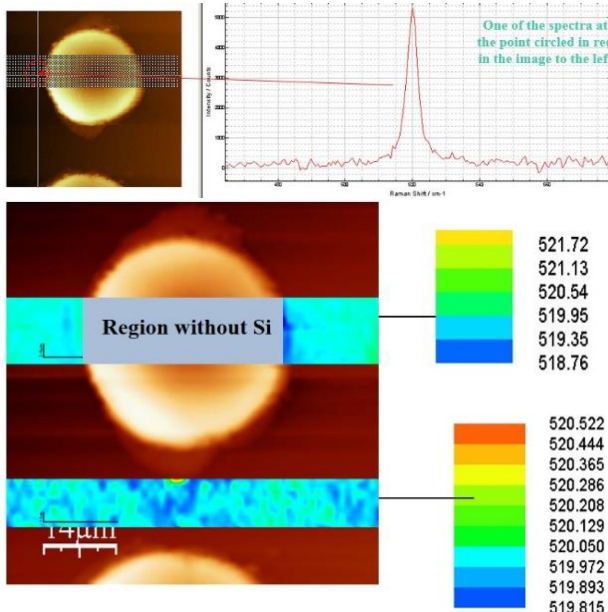
Confocal Spectroscopy Imaging



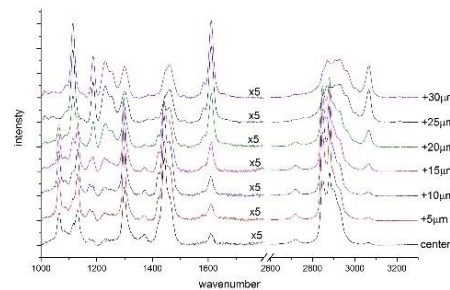
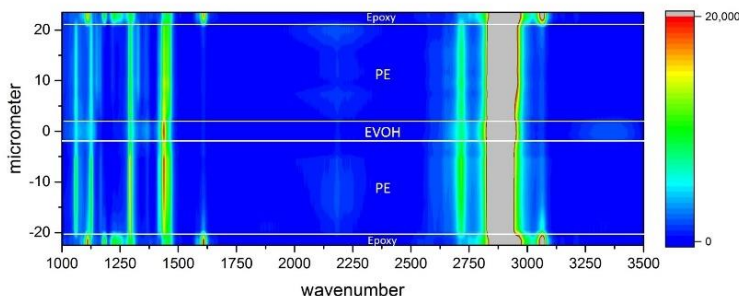
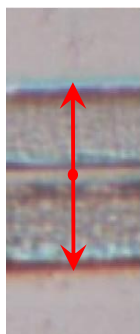
Density Analysis by Raman



Stress Mapping



Multi-Layer Raman Spectroscopy Image



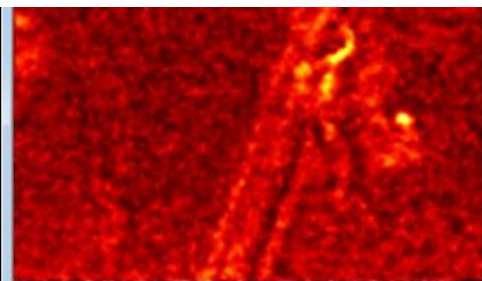
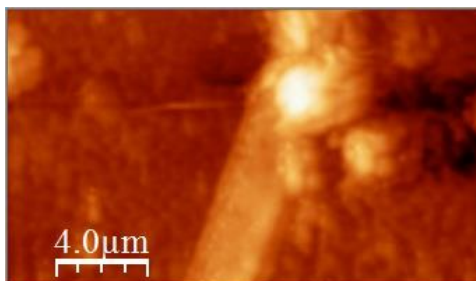


Nano TCSPC with NSOM setting



AFM

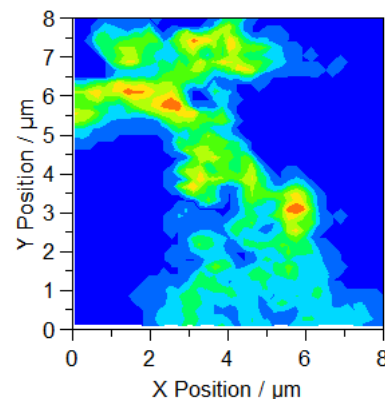
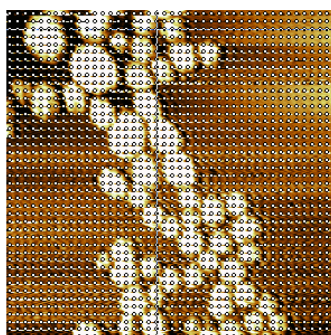
FLIM by NSOM Probe



Nano Scale Spectroscopy Mapping Solution by Scanning Probe Microscope

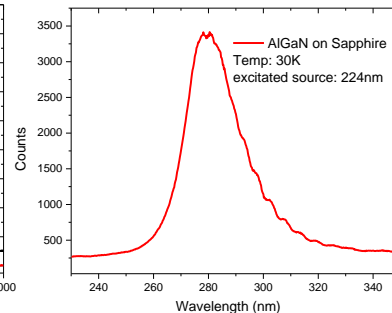
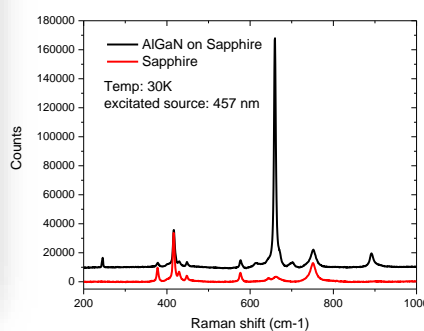


Tip Enhanced Raman Scattering



Low Temperature Raman/PL

Temperature: 4K to 600K



Make your own system with CL Technology !!

We can provide unique system based on user's requirements in spectroscopy fields.

Homepage : www.cl-technology.com.tw

E-mail : sales@cl-technology.com.tw

Specialist : Bluse Chen Phone : +886-2-22781178 Fax : +886-2-29990268 Cell: +886-973166671

Address : No.13, Alley 36, Lane 88, Sec. 2, Kuangfu Rd., Sanchung Dist., New Taipei City 24158, Taiwan

景鴻 科技 有 限 公 司

